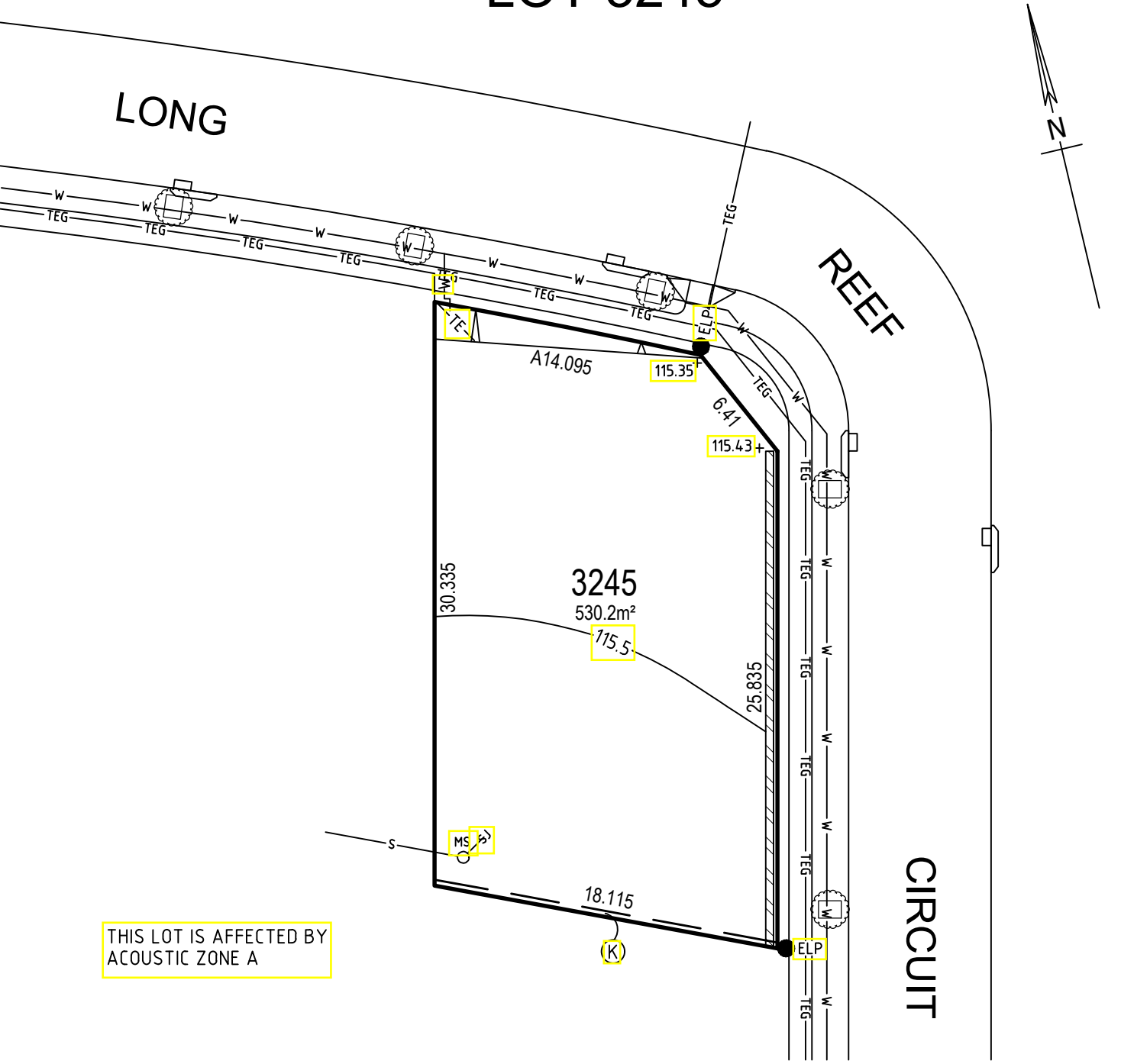


GREGORY HILLS

LOT 3245



THIS LOT IS AFFECTED BY ACOUSTIC ZONE A

LEGEND

- TEG— ELECTRICITY, TELECOMMUNICATIONS & GAS
- TE— TELECOMMUNICATIONS & ELECTRICITY
- S— SEWER — S— SEWER JUNCTION — MS — MAINTENANCE SHAFT — O — MANHOLE
- W— WATER
- SW— STORMWATER — G— GRATED PIT & LINTEL
- 47— CONTOUR — +47.00— POINT HEIGHT
- ELP ELECTRIC LIGHT POLE EP ■ ELECTRICAL PILLAR ——— RETAINING WALL
- COUNCIL STREET TREE SUBJECT TO LANDSCAPING DESIGN & COUNCIL APPROVAL

0 5 10 15
 (K) EASEMENT FOR SUPPORT 0.3 WIDE

The material herein is intended as a guide only. No liability for negligence or otherwise is assumed by Dart West, its principals or its servants or its agents. No material contained herein shall form the basis of or be part of any agreement and no warranty is given or implied as to the accuracy of the whole or any part of the material. Prospective buyers should not rely solely on this material but should make their own enquiries at the Gregory Hills Land Sales and Information Centre or contact us on (02) 46485511.