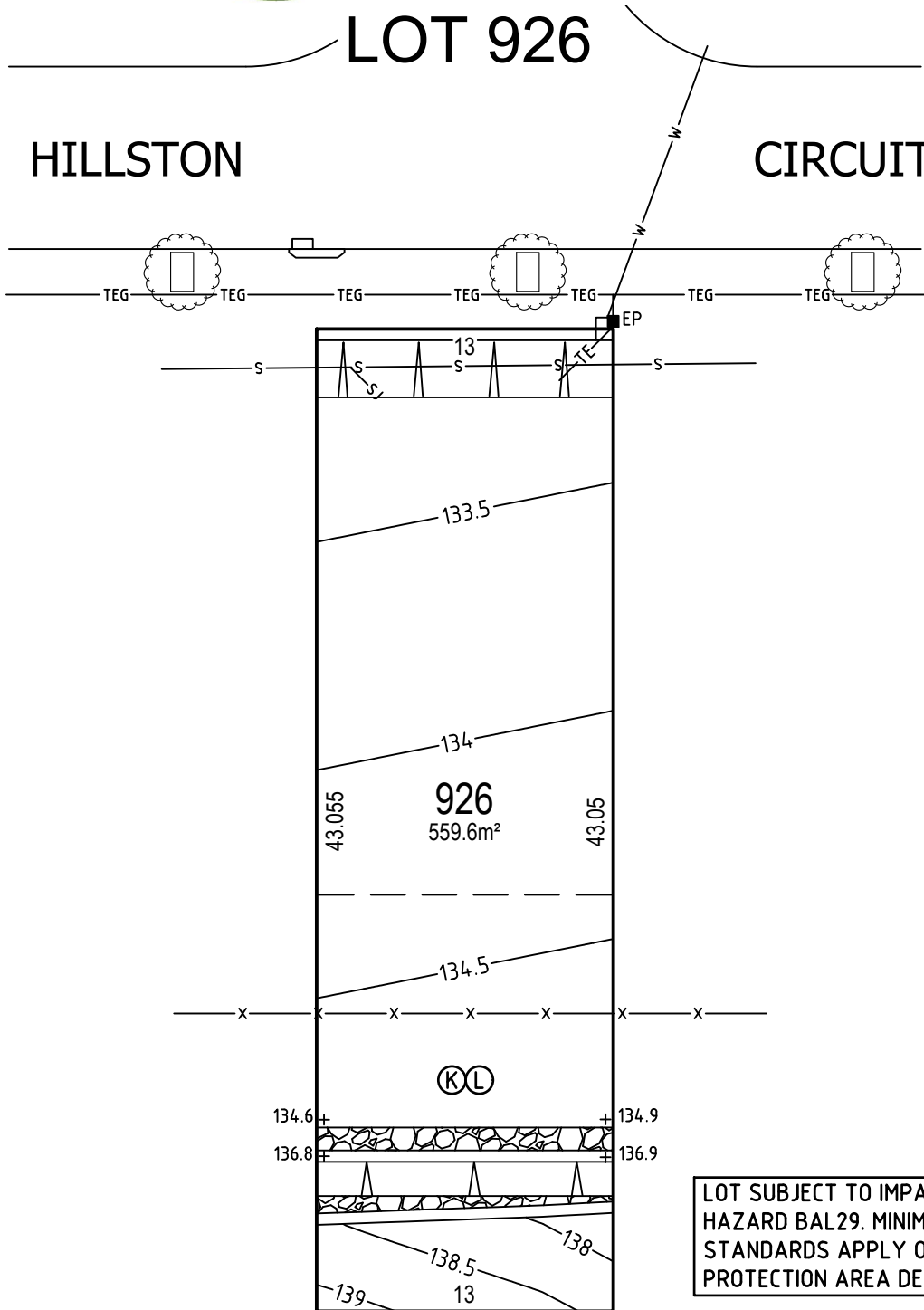
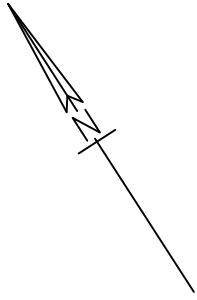


GREGORY HILLS

LOT 926

HILLSTON

CIRCUIT



LEGEND

- TEG— ELECTRICITY, TELECOMMUNICATIONS & GAS
- TE— TELECOMMUNICATIONS & ELECTRICITY
- S— SEWER —SJ— SEWER JUNCTION ○ MS— MAINTENANCE SHAFT ○ MANHOLE
- W— WATER * STOP VALVE ● HYDRANT ● SAC
- SW— STORMWATER ▭ GRATED PIT & LINTEL
- 47— CONTOUR +47.00 POINT HEIGHT ▲ BATTER AT 1:6 (V:H) GRADE
- ELP ELECTRIC LIGHT POLE EP■ ELECTRICAL PILLAR —BAL— BUSHFIRE ATTACK LEVEL
- COUNCIL STREET TREE SUBJECT TO LANDSCAPING DESIGN & COUNCIL APPROVAL TO BE LOCATED FOLLOWING DRIVEWAY CONSTRUCTION
- x— EXISTING DECOMMISSIONED SEWER TO REMAIN IN PLACE (>5m DEEP)

LOT SUBJECT TO IMPACT BY BUSHFIRE HAZARD BAL29. MINIMUM CONSTRUCTION STANDARDS APPLY OUTSIDE INNER PROTECTION AREA DENOTED (L)

0 5 10 15

(K) RESTRICTION ON THE USE OF LAND
(L) POSITIVE COVENANT

The material herein is intended as a guide only. No liability for negligence or otherwise is assumed by Dart West, its principals or its servants or its agents. No material contained herein shall form the basis of or be part of any agreement and no warranty is given or implied as to the accuracy of the whole or any part of the material. Prospective buyers should not rely solely on this material but should make their own enquiries at the Gregory Hills Land Sales and Information Centre or contact us on (02) 46485511.